

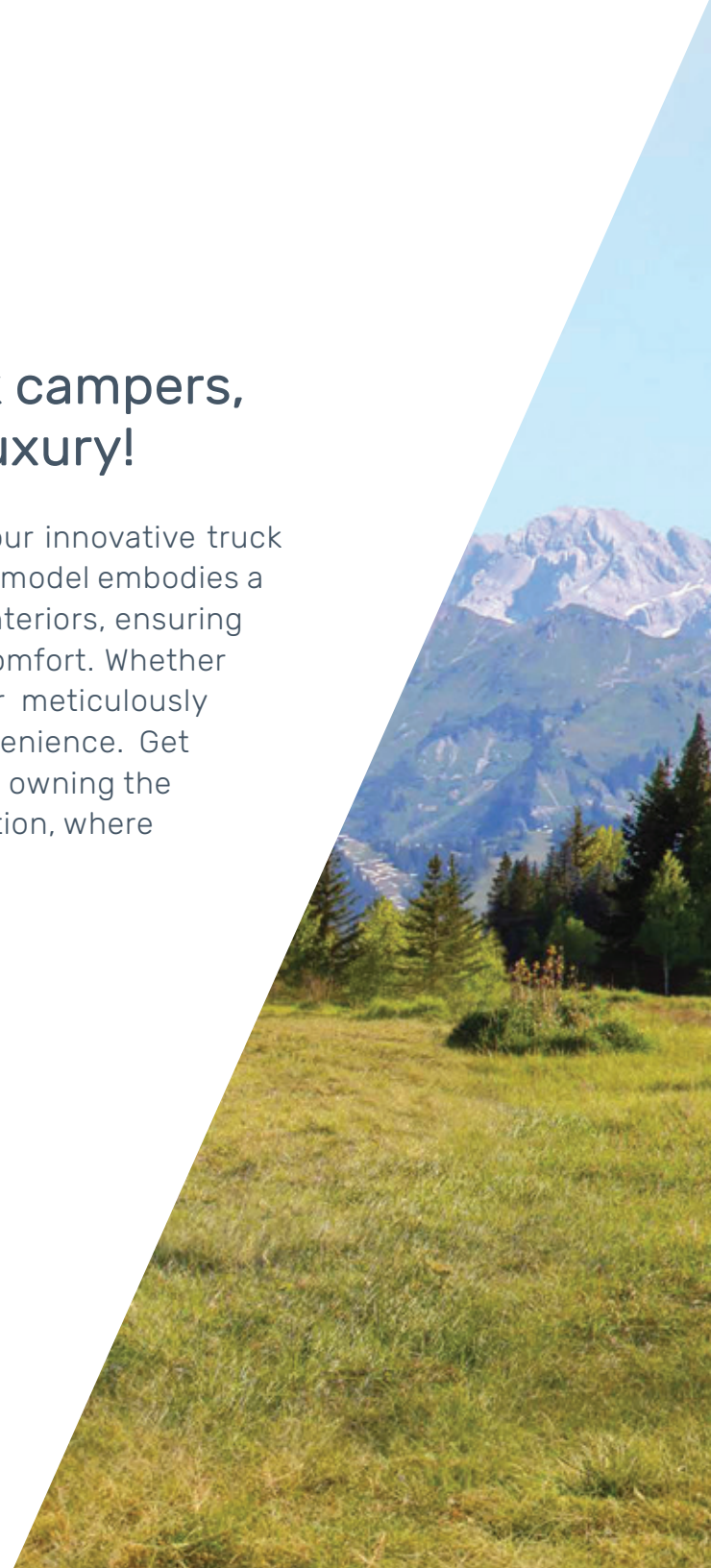
 **CITATION**
— EXPLORE



 **GENERAL COACH**
CANADA

Introducing our all-new line of high-end truck campers, where rugged adventure meets unmatched luxury!

Crafted for those who demand the best in both performance and comfort, our innovative truck campers are designed to take your outdoor experiences to the next level. Each model embodies a perfect blend of robust construction, cutting-edge technology, and opulent interiors, ensuring that you can explore off-the-beaten-path destinations without sacrificing comfort. Whether you're a seasoned adventurer or new to the world of truck camping, our meticulously designed campers are your ticket to unparalleled mobility, style, and convenience. Get ready to embark on your dream journeys with the confidence that comes from owning the pinnacle of truck camper excellence. Welcome to a new era of outdoor exploration, where every road leads to adventure and luxury knows no boundaries.



EXPLORE
Further





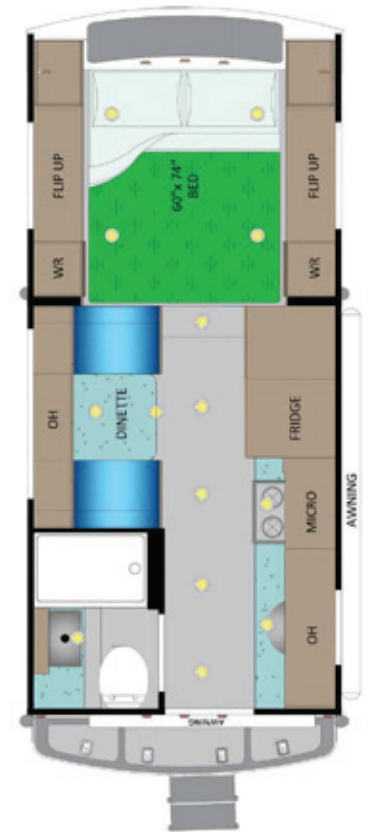
Citation **Explore 9'-2"**
350/3500+ Short Box Truck



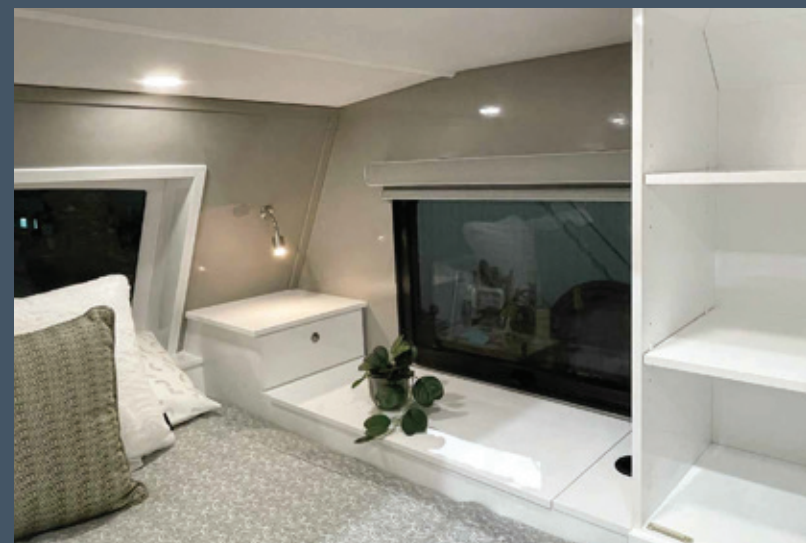
Citation **Explore 9'-6"**
350/3500+ Long Box Truck



Citation **Explore 10'-2"**
350/3500+ Long Box Truck



Citation **Explore 10'-8"**
350/3500+ Long Box Truck





INTERIOR FEATURES

INTERIOR DESIGN

- Seamless vacuum bonded fiberglass walls
- High gloss fiberglass interior finish
- Vacuum bonded floor w/ AZDEL® composite panels (insulated & waterproof)
- OLYMPIA® ceiling & front end wall sponge headliner
- Lightweight plywood modular cabinets
- Soft close European hinges throughout
- Soft close drawer glides throughout
- WHISPERLATCH™ door & drawer cam locks
- Roller blind window coverings
- LED pot lighting throughout

DINING & LOUNGE

- FURRIION® oven
- FURRIION® 12V 8cuft arctic fridge w/ freezer
- FURRIION® convection OTR microwave
- Roll top kitchen countertop
- Stainless steel kitchen sink
- MOEN® kitchen faucet
- LED undermount cabinet lighting in kitchen
- Laminate dinette top w/ slide table mechanism
- 100% pvc lounge & dinette seating w/ stitching
- MAXXAIR 4500k vent fan

BEDROOM

- Premium pocket coil queen bed (60" x 76")
- Quilted bedspread w/ pillows
- Side storage w/ lift lid and drawer (x2)
- Headboard shelf w/ USB outlet
- LED reading lights (x2)
- Skylight (22" x 34") w/ pleated night shade

BATHROOM

- Fully sealed wet bathroom (9' 2", 9' 6", 10' 2")
- Dry bath (10' 8")
- Frosted glass shower door entry
- CORIAN® countertop
- Stainless steel lavatory sink
- DOMETIC® 310 porcelain toilet
- Removable hand-held shower head wand
- MAXXAIR dome fan with light
- Full-size glass mirror
- Waterproof toilet paper holder

EXTERIOR FEATURES

EXTERIOR DESIGN

- Custom design welded aluminum roof
- Custom built fiberglass front cap
- Vacuum bonded, seamless, fiberglass walls w/ AZDEL® composite panels (insulated & waterproof)
- High gloss exterior w/ two colour options
- Custom aluminum bumper w/ folding step & storage
- Front automotive windshield w/ dark tint
- Frameless THERMO windows throughout w/ dark tint
- CHALLENGER® entrance door w/ friction hinges
- CHALLENGER® screen door
- CHALLENGER® digital key pad entrance lock
- Propane tanks w/ auto 2 stage regulator (2@ 20lb Steel LP tanks)
- Lithium battery w/ multi-stage converter (100AH)
- LED entrance light
- LED tail lights & clearance lighting (DOT APPROVED)
- License plate bracket w/ light
- City water inlet w/ water pressure regulator
- Fresh water gravity fill inlet
- Rear wall mounted ladder
- Solar equipped for 12V system w/ interior monitor (2@ 200w panels - inverter ready)
- CAREFREE® power awnings - rear & side
- TRUMA® 13,500 btu air conditioner

CHASSIS

- HAPPIJAK® 51" black electric legs w/ remote
- Black checkerplate protective covering
- Aluminum riser frame bolted to underbelly

ADDITIONAL

- TRUMA® combi comfort water heater / furnace
- Stereo system & television w/ mount
- WINEGARD® 5 G/LTE roof mount antenna
- USB-C combo outlets throughout
- Fire extinguisher
- Powered LP leak detector
- Emergency manual crank for powered leg jacks
- Winterization bypass valve
- 5 year General Coach limited structural warranty (non-transferable)



BUILD SPECIFICATIONS

	9' 2"	9' 6"	10' 2"	10' 8"
OVERALL EXTERIOR LENGTH	18' 10"	19' 2"	19' 10"	20' 3"
EXTERIOR BOX LENGTH	9' 2"	9' 6"	10' 2"	10' 8"
EXTERIOR WIDTH	8' 3"	8' 3"	8' 3"	8' 3"
EXTERIOR HEIGHT W/ A/C	10' 1"	10' 1"	10' 1"	10' 1"
INTERIOR HEIGHT	6' 6"	6' 6"	6' 6"	6' 6"
CABOVER HEIGHT (BEDROOM)	3' 11"	3' 11"	3' 11"	3' 11"
CENTER OF GRAVITY	39"	39"	46.5"	48.5"
DRY WEIGHT W/ STD EQUIPMENT	4,444 LBS	4,263 LBS	4,748 LBS	4,681 LBS
FRESH WATER TANK CAPACITY	40 (U.S. GAL)	38 (U.S. GAL)	51 (U.S. GAL)	51 (U.S. GAL)
GREY WATER TANK CAPACITY	23 (U.S. GAL)	32 (U.S. GAL)	32 (U.S. GAL)	32 (U.S. GAL)
BLACK WATER TANK CAPACITY	23 (U.S. GAL)	32 (U.S. GAL)	32 (U.S. GAL)	32 (U.S. GAL)
TRUMA® COMBI WATER HEATER/ FURNACE	STD	STD	STD	STD
55AMP POWER CONVERTER	STD	STD	STD	STD
30AMP TWIST LOCK POWER CORD	STD	STD	STD	STD
400W-12V SOLAR PACKAGE W/ MONITOR	STD	STD	STD	STD
12V LITHIUM BATTERY	X1 STD	X1 STD	X1 STD	X1 STD
20 (LB) PROPANE TANK W/ REGULATOR	X2 STD	X2 STD	X2 STD	X2 STD





HURON RIDGE

**BLACK
DIAMOND
EDITION**

**LUNAR
moon
COLLECTION**

Roughneck
RV

**DELUXE
CABINS**

**CITATION
— REWARD**



Building Something Better

Associate Members of



**RV
INDUSTRY
ASSOCIATION**



Go RVing
Canada

ATLANTIC
RV DEALERS' ASSOCIATION

PROUD MEMBER OF



OASIS
Ontario Association of
Sewage Industry Services

GENERAL COACH
CANADA

73 Mill Street, Hensall, Ontario N0M 1X0 • 855.262.2600 • info@generalcoachcanada.com • generalcoachcanada.com

General Coach Canada reserves the right to improve or modify the product, which may change specifications, designs or prices. Information contained in this brochure is current at the time of printing. Photographs and descriptions may contain some standard features and some optional extras. Some options may only be available on a pre-production basis. All specifications are approximate. Not all available options are listed.

Printed in Canada